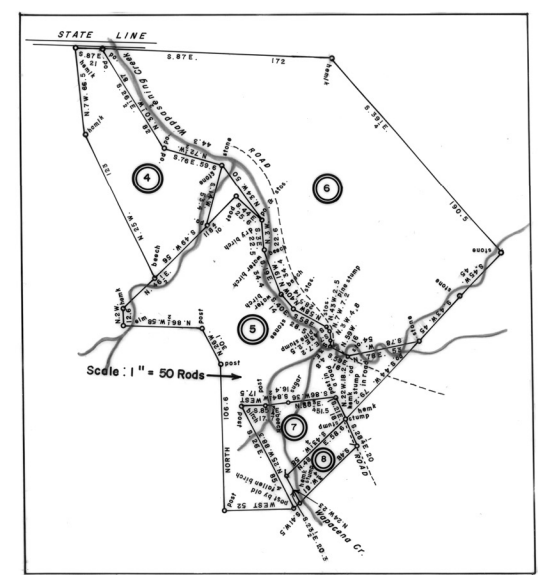
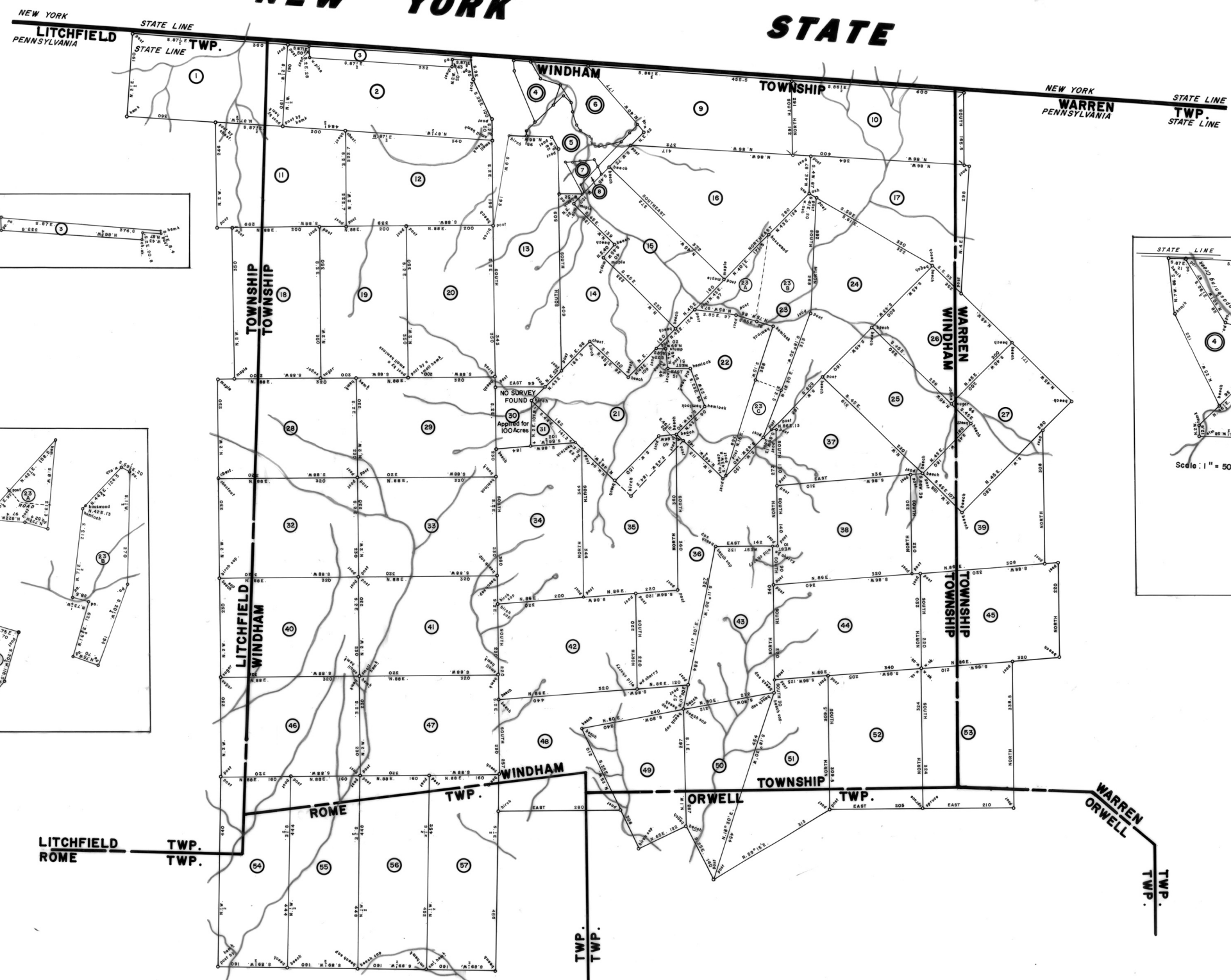
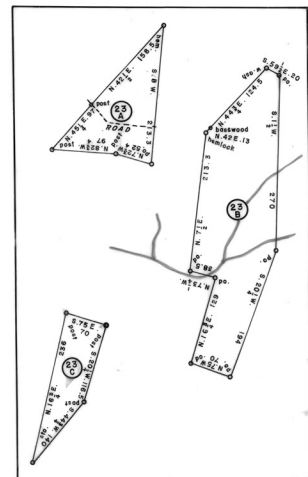
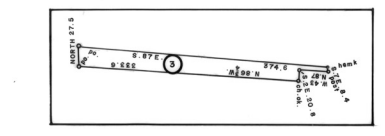


NEW YORK STATE



1 HENRY HEYLI 402 ACRES—40 PERCHES & Alliv WARRANT FEB. 18, 1793 SURVEY OCT. 17, 1794 PATENT FEB. 18, 1803 To—James Donatious LaRoyde Choumont "Londown"	2 JAMES HEYLI 424 ACRES—40 PERCHES & Alliv WARRANT FEB. 18, 1793 SURVEY OCT. 17, 1794 PATENT FEB. 18, 1803 To—James Donatious LaRoyde Choumont "Rumford"	3 WYATT BARNES 54 ACRES—10 PERCHES & Alliv WARRANT FEB. 18, 1793 SURVEY OCT. 17, 1794 PATENT FEB. 18, 1803 To—WYATT BARNES "Rumford"	4 STEPHEN MOSEER 51 ACRES—40 PERCHES & Alliv WARRANT JUL. 7, 1793 SURVEY JUL. 21, 1793 PATENT JUL. 21, 1794 To—William & Nehemiah Platt "Rumford"
5 DANIEL BROEMAKER 34 ACRES—10 PERCHES & Alliv WARRANT FEB. 18, 1793 SURVEY OCT. 17, 1794 PATENT FEB. 18, 1803 To—DANIEL BROEMAKER "Londown"	6 PARLEY JOHNSON 194 ACRES—40 PERCHES & Alliv WARRANT FEB. 18, 1793 SURVEY OCT. 17, 1794 PATENT FEB. 18, 1803 To—PARLEY JOHNSON "Rumford"	7 SAMUEL B. BROEMAKER 16 ACRES—10 PERCHES & Alliv WARRANT FEB. 18, 1793 SURVEY OCT. 17, 1794 PATENT FEB. 18, 1803 To—SAMUEL B. BROEMAKER "Rumford"	8 BETJ SMITH 7 ACRES—10 PERCHES & Alliv WARRANT FEB. 18, 1793 SURVEY OCT. 17, 1794 PATENT FEB. 18, 1803 To—BETJ SMITH "Rumford"
9 SAMUEL WILCOX 170 ACRES & Alliv WARRANT FEB. 18, 1793 SURVEY OCT. 17, 1794 PATENT FEB. 18, 1803 To—Samuel Wilcox "Londown"	10 NABLOUGH FRAZIER 382 ACRES—40 PERCHES & Alliv WARRANT FEB. 18, 1793 SURVEY OCT. 17, 1794 PATENT FEB. 18, 1803 To—Charles & Nancy Cook & Wm "Londown"	11 PAUL LUNDY 416 ACRES—40 PERCHES & Alliv WARRANT FEB. 18, 1793 SURVEY OCT. 17, 1794 PATENT FEB. 18, 1803 To—James Donatious LaRoyde Choumont "Emsworth"	12 JAMES LUNDY 416 ACRES—40 PERCHES & Alliv WARRANT FEB. 18, 1793 SURVEY OCT. 17, 1794 PATENT FEB. 18, 1803 To—James Donatious LaRoyde Choumont "Emsworth"
13 JOHN TAWSON 424 ACRES—40 PERCHES & Alliv WARRANT FEB. 18, 1793 SURVEY OCT. 17, 1794 PATENT FEB. 18, 1803 To—Phineas Bond "Avonmore"	14 JOHN HUNTSMAN 347 ACRES—40 PERCHES & Alliv WARRANT FEB. 18, 1793 SURVEY OCT. 17, 1794 PATENT FEB. 18, 1803 To—Phineas Bond "Londown"	15 JOHN BROWN 312 ACRES & Alliv WARRANT FEB. 18, 1793 SURVEY OCT. 17, 1794 PATENT FEB. 18, 1803 To—John Wadsworth "Finchburg"	16 THOMAS CLARK 424 ACRES—40 PERCHES & Alliv WARRANT FEB. 18, 1793 SURVEY OCT. 17, 1794 PATENT FEB. 18, 1803 To—James Donatious LaRoyde Choumont "Dundas"
17 JOHN PABE 391 ACRES—40 PERCHES & Alliv WARRANT FEB. 18, 1793 SURVEY OCT. 17, 1794 PATENT FEB. 18, 1803 To—James Donatious LaRoyde Choumont "Southwick"	18 ROSER GRIFFIN 416 ACRES—40 PERCHES & Alliv WARRANT FEB. 18, 1793 SURVEY OCT. 17, 1794 PATENT FEB. 18, 1803 To—James Donatious LaRoyde Choumont "Southwick"	19 MUSH GRIFFIN 416 ACRES—40 PERCHES & Alliv WARRANT FEB. 18, 1793 SURVEY OCT. 17, 1794 PATENT FEB. 18, 1803 To—James Donatious LaRoyde Choumont "Southwick"	20 HENRY LUNDY 416 ACRES—40 PERCHES & Alliv WARRANT FEB. 18, 1793 SURVEY OCT. 17, 1794 PATENT FEB. 18, 1803 To—James Donatious LaRoyde Choumont "Munichwary"
21 DANIEL SOANE 432 ACRES—40 PERCHES & Alliv WARRANT FEB. 18, 1793 SURVEY OCT. 17, 1794 PATENT FEB. 18, 1803 To—DANIEL SOANE "Londown"	22 DANIEL SOANE 385 ACRES—40 PERCHES & Alliv WARRANT FEB. 18, 1793 SURVEY OCT. 17, 1794 PATENT FEB. 18, 1803 To—DANIEL SOANE "Londown"	23 JESSE BRIDLE 301 ACRES—10 PERCHES & Alliv WARRANT FEB. 18, 1793 SURVEY OCT. 17, 1794 PATENT FEB. 18, 1803 To—Joseph Wharton "Southwick"	24 JAMES BODDEN 301 ACRES—10 PERCHES & Alliv WARRANT FEB. 18, 1793 SURVEY OCT. 17, 1794 PATENT FEB. 18, 1803 To—Joseph Wharton "Southwick"
25 JOHN VANDERBILT 30 ACRES—40 PERCHES & Alliv WARRANT FEB. 18, 1793 SURVEY OCT. 17, 1794 PATENT FEB. 18, 1803 To—Samuel Meradith "Springfield"	26 PATRICK GRIFFIN 432 ACRES—40 PERCHES & Alliv WARRANT FEB. 18, 1793 SURVEY OCT. 17, 1794 PATENT FEB. 18, 1803 To—James Donatious LaRoyde Choumont "Southwick"	27 JESSE SMITH 432 ACRES—40 PERCHES & Alliv WARRANT FEB. 18, 1793 SURVEY OCT. 17, 1794 PATENT FEB. 18, 1803 To—James Donatious LaRoyde Choumont "Rattlerdam"	28 SAMUEL LUNDY 432 ACRES—40 PERCHES & Alliv WARRANT FEB. 18, 1793 SURVEY OCT. 17, 1794 PATENT FEB. 18, 1803 To—James Donatious LaRoyde Choumont "Rattlerdam"
29 JONATHAN READE 21 ACRES—10 PERCHES & Alliv WARRANT FEB. 18, 1793 SURVEY OCT. 17, 1794 PATENT FEB. 18, 1803 To—Jonathan Pease "Londown"	30 ELEMENT BIDOLE 301 ACRES—10 PERCHES & Alliv WARRANT FEB. 18, 1793 SURVEY OCT. 17, 1794 PATENT FEB. 18, 1803 To—Joseph Wharton "Southwick"	31 JOSEPH DOAN 32 ACRES—10 PERCHES & Alliv WARRANT FEB. 18, 1793 SURVEY OCT. 17, 1794 PATENT FEB. 18, 1803 To—JOSEPH DOAN "Plymouth"	32 THOMAS EVANS 490 ACRES—10 PERCHES & Alliv WARRANT FEB. 18, 1793 SURVEY OCT. 17, 1794 PATENT FEB. 18, 1803 To—Phineas Bond "Plymouth"
33 SAMUEL GRIFFIN 432 ACRES—40 PERCHES & Alliv WARRANT FEB. 18, 1793 SURVEY OCT. 17, 1794 PATENT FEB. 18, 1803 To—James Donatious LaRoyde Choumont "Southwick"	34 JOHN GRASE 432 ACRES—40 PERCHES & Alliv WARRANT FEB. 18, 1793 SURVEY OCT. 17, 1794 PATENT FEB. 18, 1803 To—Phineas Bond "Andonia"	35 PETER EVANS 490 ACRES—10 PERCHES & Alliv WARRANT FEB. 18, 1793 SURVEY OCT. 17, 1794 PATENT FEB. 18, 1803 To—Phineas Bond "Towerhill"	36 THOMAS EVANS 490 ACRES—10 PERCHES & Alliv WARRANT FEB. 18, 1793 SURVEY OCT. 17, 1794 PATENT FEB. 18, 1803 To—Phineas Bond "Plymouth"
37 WILLIAM INGLE 27 ACRES—10 PERCHES & Alliv WARRANT FEB. 18, 1793 SURVEY OCT. 17, 1794 PATENT FEB. 18, 1803 To—Phineas Bond "Dropmore"	38 JOSEPH INGLE 432 ACRES—40 PERCHES & Alliv WARRANT FEB. 18, 1793 SURVEY OCT. 17, 1794 PATENT FEB. 18, 1803 To—Phineas Bond "Mount Edge Comb"	39 JOHN MORRIS 408 ACRES—10 PERCHES & Alliv WARRANT FEB. 18, 1793 SURVEY OCT. 17, 1794 PATENT FEB. 18, 1803 To—Phineas Bond "Westminster"	40 SAMUEL REEDER 432 ACRES—40 PERCHES & Alliv WARRANT FEB. 18, 1793 SURVEY OCT. 17, 1794 PATENT FEB. 18, 1803 To—James Donatious LaRoyde Choumont "Argilla"
41 THOMAS EKERLY 416 ACRES & Alliv WARRANT FEB. 18, 1793 SURVEY OCT. 17, 1794 PATENT FEB. 18, 1803 To—Phineas Bond "Comden"	42 JOSEPH LESBLANE 35 ACRES—10 PERCHES & Alliv WARRANT FEB. 18, 1793 SURVEY OCT. 17, 1794 PATENT FEB. 18, 1803 To—Samuel Meradith "Gulvin Lodge"	43 MORDECAI ROBERTS 416 ACRES & Alliv WARRANT FEB. 18, 1793 SURVEY OCT. 17, 1794 PATENT FEB. 18, 1803 To—Phineas Bond "Kew"	44 BENJAMIN EINES 432 ACRES—40 PERCHES & Alliv WARRANT FEB. 18, 1793 SURVEY OCT. 17, 1794 PATENT FEB. 18, 1803 To—Phineas Bond "The Land of Coxe"
45 JOHN BARRON 417 ACRES & Alliv WARRANT FEB. 18, 1793 SURVEY OCT. 17, 1794 PATENT FEB. 18, 1803 To—James Donatious LaRoyde Choumont "Munichwary"	46 HENRY BONNELL 40 ACRES—40 PERCHES & Alliv WARRANT FEB. 18, 1793 SURVEY OCT. 17, 1794 PATENT FEB. 18, 1803 To—James Donatious LaRoyde Choumont "Dobbsboro"	47 GEORGE BENTLY 416 ACRES—40 PERCHES & Alliv WARRANT FEB. 18, 1793 SURVEY OCT. 17, 1794 PATENT FEB. 18, 1803 To—James Donatious LaRoyde Choumont "Dundas"	48 SAMUEL BENTLY 416 ACRES—40 PERCHES & Alliv WARRANT FEB. 18, 1793 SURVEY OCT. 17, 1794 PATENT FEB. 18, 1803 To—James Donatious LaRoyde Choumont "Dundas"

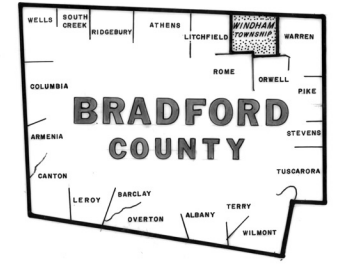


A CONNECTED WARRANTEE TOWNSHIP MAP of Windham Township in Bradford County. The warrants, surveys and patents bearing respectively the dates as above set forth, are constructed from and have been compared with the original drafts on file in the Division of Land Records, Bureau of Archives and History, Historical and Museum Commission, Commonwealth of Pennsylvania, under the direction of Edward D. Price, Chief.

IN TESTIMONY WHEREOF, I have hereunto set my hand and caused the seal of the said Commission to be affixed at Harrisburg, Pennsylvania, this fourth day of October A. D. one thousand nine hundred and eighty two.



LARRY E. TISE, Executive Director, Historical and Museum Commission



NOTE: All Borough, Township and County Lines as shown are approximate as of this date, and should not be considered official on this map.